

# SANTY

## Powering Your Progress

SANTY INDUSTRIAL EQUIPMENT  
MANUFACTURING INDIA PVT LTD.



### Address:

GSTIN: 29ABJCS3545HIZZ

285-G, SY NO. 25,

Narasapura Industrial Area,

Kolar, Karnataka, 563133.

**Gmail:** [santyequipment@gmail.com](mailto:santyequipment@gmail.com)

### More info

[www.santyindustries.com](http://www.santyindustries.com)

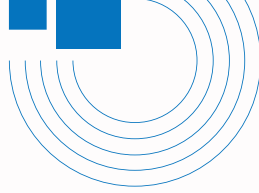
# OUR TEAM



## Team – Santy Industries

Team Santy Industries is powered by skilled engineers and dedicated professionals who ensure precision in every project. With deep industry expertise, we deliver solutions that uphold quality, innovation, and reliability. Our collaborative approach enables us to meet client needs with efficiency and excellence. We constantly upgrade our skills and technology to stay ahead in the industry. Every member of our team is committed to maintaining the highest standards in manufacturing and service delivery.

*"Strength in skill, success in teamwork".*



# ABOUT US

---

Santy Industries is a leading manufacturer of industrial equipment, delivering reliable, innovative, and high-quality engineering solutions across industries. With a strong focus on precision and sustainability, we design products that enhance productivity and operational efficiency. Backed by advanced technology, rigorous quality standards, and a skilled engineering team, we provide end-to-end solutions tailored to evolving industry needs.

## VISION

---

To lead the global industrial equipment sector through innovation, sustainability, and unmatched operational excellence, driving responsible progress for a better future.



## MISSION

---

To deliver innovative, state-of-the-art industrial equipment that anticipates client needs and elevates industry standards. We are dedicated to continuous improvement and responsible manufacturing, integrating sustainable practices to reduce our environmental impact and contribute to a greener future.



# TABLE OF CONTENTS

---

 <b>Clean Booth Process</b>	<b>5</b>
 <b>Clean Booth Products</b>	<b>8</b>
 <b>Clean Room Process</b>	<b>9</b>
 <b>Clean Room Products</b>	<b>12</b>
 <b>Conveyor Process</b>	<b>13</b>
 <b>Conveyor Products</b>	<b>16</b>
 <b>Facility Management</b>	<b>17</b>
 <b>ESD Products</b>	<b>19</b>
 <b>Supplier Products</b>	<b>20</b>
 <b>Why Choose Us</b>	<b>21</b>
 <b>Our Clients</b>	<b>22</b>
 <b>Contact</b>	<b>23</b>

# CLEAN BOOTH INSTALLATION PROCESS

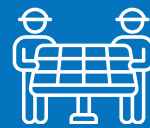


## STEP 1: SITE EVALUATION

Assessing your facility and workflow to design a customized solution.

## STEP 2: TAILORED DESIGN

Planning advanced layouts with optimal airflow and filtration.



## STEP 3: PRECISE ASSEMBLY

Professional installation ensuring airtight integrity and dependable performance.

## STEP 4: SYSTEM INTEGRATION

Installing lighting, HEPA filters, and control systems for full functionality.



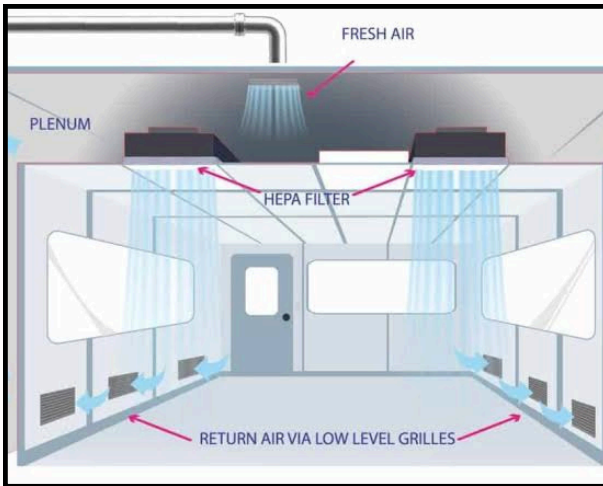
## STEP 5: TESTING & HANDOVER

Validating performance and providing operational training for smooth use.

## OUTCOME

A high-efficiency clean booth that boosts productivity, safety, and operational excellence.





Tailored Design



Precise Assembly



System Integration



System Integration



Testing &  
Handover



Outcome

# CLEAN BOOTH

We design and install Clean Booths to provide a controlled, dust-free, and contamination-controlled environment within existing facilities. Our clean booths are engineered to meet specific cleanliness requirements and operational needs.

## KEY FEATURES

- HEPA / ULPA filtration system
- Vertical or horizontal laminar airflow.
- LED cleanroom lighting.
- Anti-static vinyl / epoxy flooring (optional).
- Customized size and layout as per requirement.
- Uniform air distribution with low noise operation.
- Modular structure with aluminum / MS powder-coated frame



# **CLEAN BOOTH PRODUCTS**

## **FFU – FAN FILTER UNIT**



FFU Filter



NBG Non woven bag  
air filter



HGF Glass  
fiber cotton



Non partitioned high  
efficiency air filter

# CLEAN ROOM INSTALLATION PROCESS

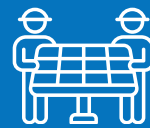


## STEP 1: SITE EVALUATION

Assessment of site conditions and cleanliness requirements.

## STEP 2: TAILORED DESIGN

Customized clean room design as per industry standards.



## STEP 3: PRECISE ASSEMBLY

Airtight installation of panels and clean room components.

## STEP 4: SYSTEM INTEGRATION

Integration of HVAC, FFU, and electrical systems.



## STEP 5: TESTING & HANDOVER

Testing and validation for compliant clean room delivery.

## OUTCOME

A fully functional, contamination-free clean room environment.





Top Structural On-Site Work



3D Clean Room Design



Clean Room Interior Design



FFU Units Testing



Clean Room Interior Design



Clean Room Interior Design

# **CLEAN ROOM (ROCK WOOL PANEL TYPE)**

Clean Room with Rock Wool Panels is designed to provide a controlled, dust-free, and hygienic environment for sensitive manufacturing and processing operations. Rock wool insulation ensures excellent thermal resistance, fire safety, and sound insulation.

## **KEY FEATURES**

- Rock wool insulated sandwich panels.
- High fire resistance and thermal insulation.
- Compatible with HEPA filtration systems.
- Smooth, non-dust-generating wall and ceiling surfaces.
- Durable, hygienic, and easy-to-clean construction.



# CLEAN ROOM PRODUCTS



Rock Wool /  
Mineral Wool



Scientific Doors



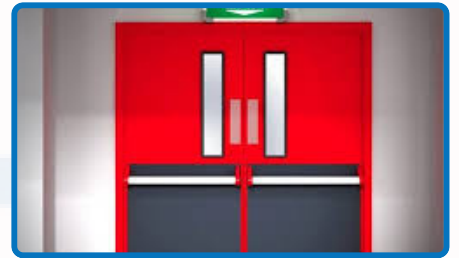
Fire Rated Doors



Hatch Doors



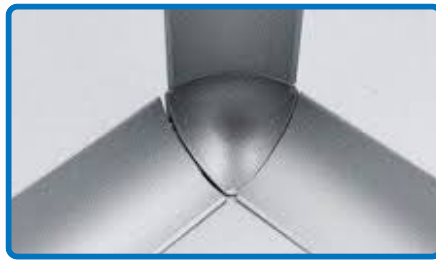
PUF (Polyurethane  
Foam)



Emergency  
Doors



Viewing Panels



3D coving for  
ceiling and walls



3D coving for  
ceiling and walls



Projected  
Raisers



Honey Comb  
Kraft



Clean room Fan  
Filter Unit

# CONVEYOR INSTALLATION PROCESS

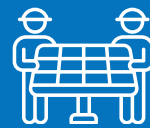


## STEP 1: SITE EVALUATION

Understanding your workflow and requirements for a tailored solution.

## STEP 2: TAILORED DESIGN

Preparing components and layout for optimal performance.



## STEP 3: PRECISE ASSEMBLY

Expert installation for smooth, reliable operation.

## STEP 4: SYSTEM INTEGRATION

Connecting power, automation, and safety systems.



## STEP 5: TESTING & HANDOVER

Ensuring peak performance and providing operational guidance.

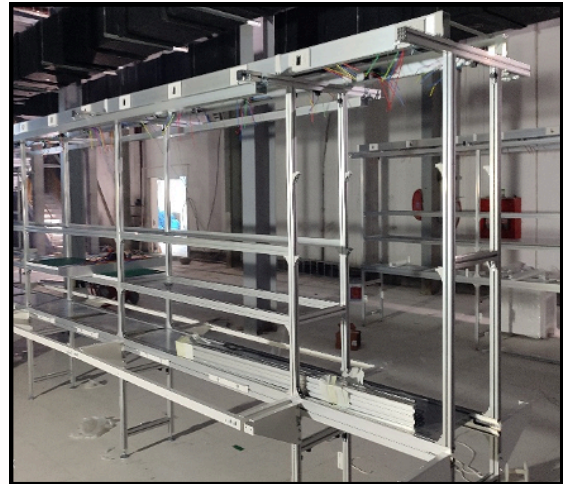
## OUTCOME

A fully functional, safe, and high-efficiency conveyor system that keeps your operations running smoothly.





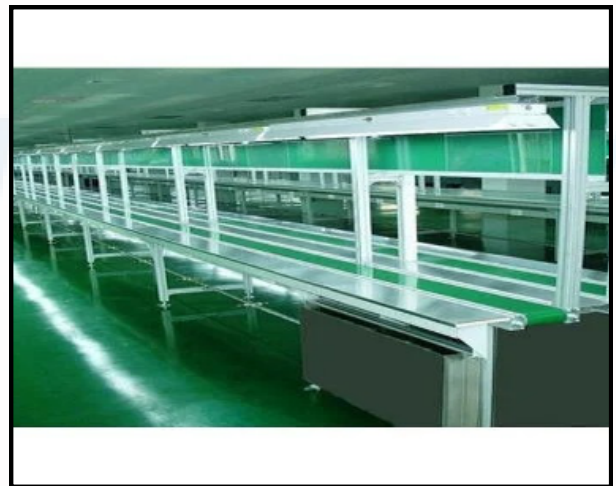
Conveyor Design



Conveyor Super  
Structure Assembly



Trial Running Test



Dry Running Test



Conveyor Power  
Testing



Conveyor Handover

# CONVEYOR ASSEMBLY

Line Conveyor Assembly is designed for smooth and continuous material movement in production and assembly lines. It improves efficiency, reduces manual handling, and ensures consistent workflow.

## KEY FEATURES

- Robust and durable structure.
- Smooth and reliable operation.
- Customizable length and width.
- Low maintenance.
- Suitable for continuous operation.



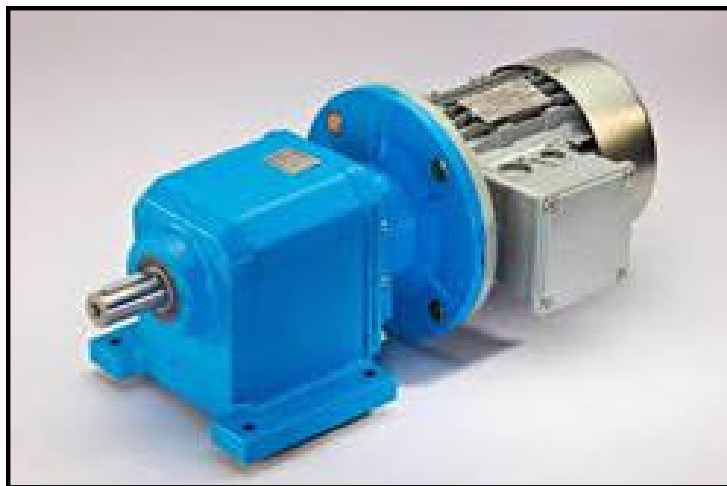
# CONVEYOR PRODUCTS



DRIVE ROLLER & DRIVEN  
ROLLER



WEIGHING CONVEYOR



FORWARD MOTORS  
CONVEYOR



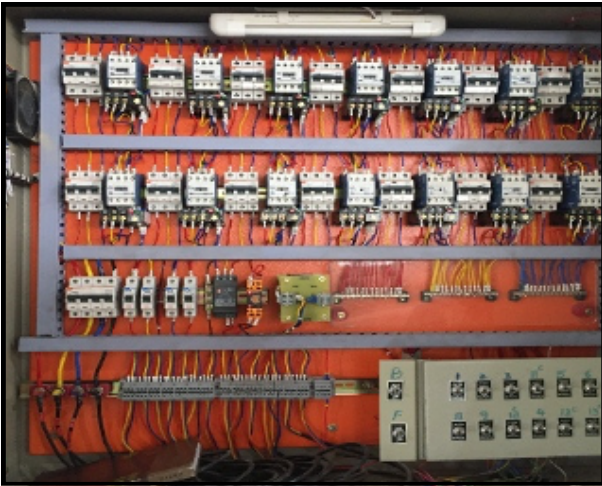
PORTABLE CONVEYOR

# FACILITY ELECTRICAL WORK

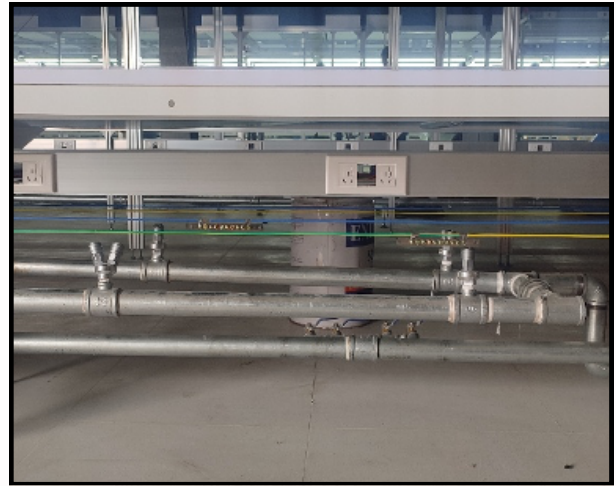
We provide complete facility electrical solutions for industrial, commercial, and cleanroom environments, ensuring safe, reliable, and efficient power distribution in compliance with applicable standards.

## SCOPE OF WORK

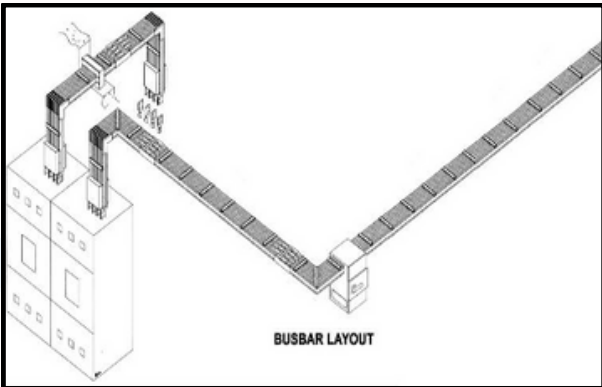
- Electrical layout planning and execution.
- Power distribution panel installation (LT panels, DBs).
- Internal and external electrical wiring.
- Lighting systems installation (LED, emergency lighting).
- Earthing and lightning protection systems.
- Cable tray and conduit installation.
- Machine power point and socket installations.
- UPS and DG power connectivity
- Testing, commissioning, and safety compliance



Panel Termination



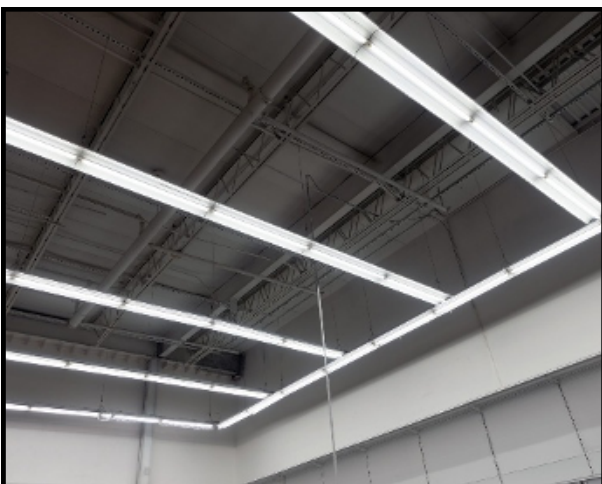
CDA & Vacuum



Busbar Trunking System



Busbar with Grounding

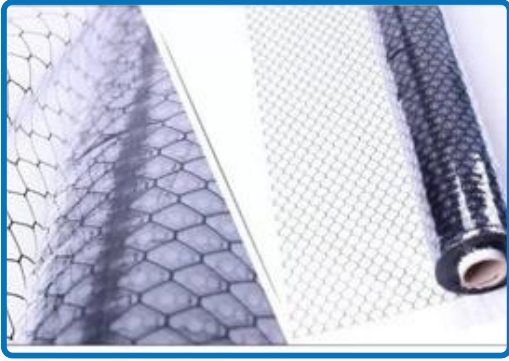


Tube Light Hanging with Tray



Cable Tray Fabrication Work

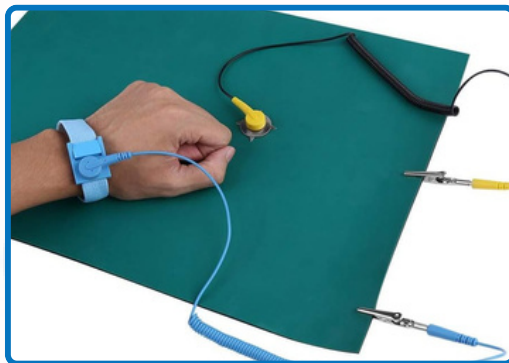
# ESD PRODUCTS



ESD CURTAINS



ESD CONVEYOR  
GREEN BELTS



ANTI - STATIC  
WRIST STRAP



ESD GREEN MATS



ESD TABLE WITH POWER  
SOCKET & LIGHTS



ALUMINIUM TROLLY  
WITH ESD



GRANITE TABLE WITH  
SS FRAME



MS TABLE WITH  
ESD WOOD

# SUPPLIER PRODUCTS



FFU ( FAN FILTER UNIT ) HEPA FILTERS



ESD CHAIR



HYDRAULIC  
TROLLY



INDUSTRIAL TOOLS



DRILL MACHINE

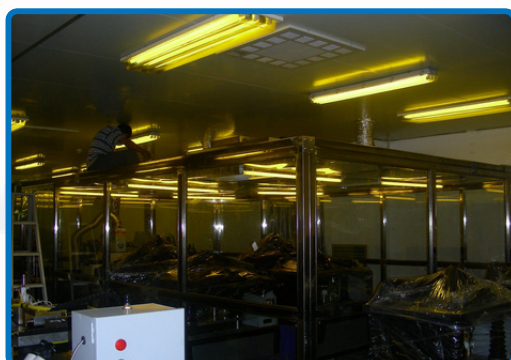


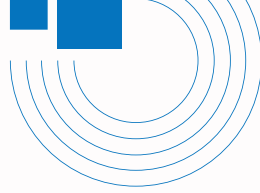
LEAN PIPE TROLLY



ESD TABLE

# GALLERY

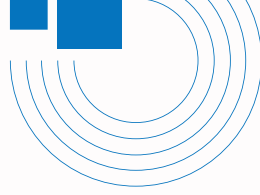




# WHY CHOOSE US?

**Santy Industries stands as a trusted leader in industrial equipment manufacturing, delivering high-performance solutions that empower businesses to operate smarter, safer, and more efficiently. Our unwavering commitment to quality, innovation, and customer success sets us apart in a competitive market.**

- Proven expertise with years of experience in industrial equipment manufacturing.
- Commitment to innovation and cutting-edge technology.
- High-quality, reliable, and durable products.
- Sustainable and eco-friendly manufacturing practices.
- 100+ projects successfully completed.
- Strong ethical standards and trustworthy partnerships.



# OUR CLIENTS



**TATA ELECTRONICS  
PRIVATE LIMITED**



**TATA ELECTRONICS SYSTEMS  
SOLUTIONS PRIVATE LIMITED**



**PEGATRON  
TECHNOLOGY INDIA  
PVT LTD**



**TATA ELECTRONICS  
PRIVATE LIMITED**



# CONTACT INFORMATION

---



+91 9655037657  
+91 8438318922



[santyequipment@gmail.com](mailto:santyequipment@gmail.com)



**GSTIN:** 29ABJCS3545H1ZZ



285-G, Sy. No. 25,  
Narasapura Industrial Area,  
Kolar,  
Karnataka – 563133 India